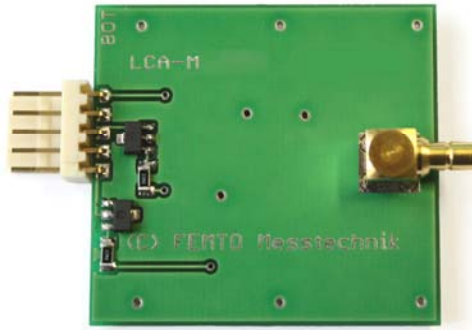
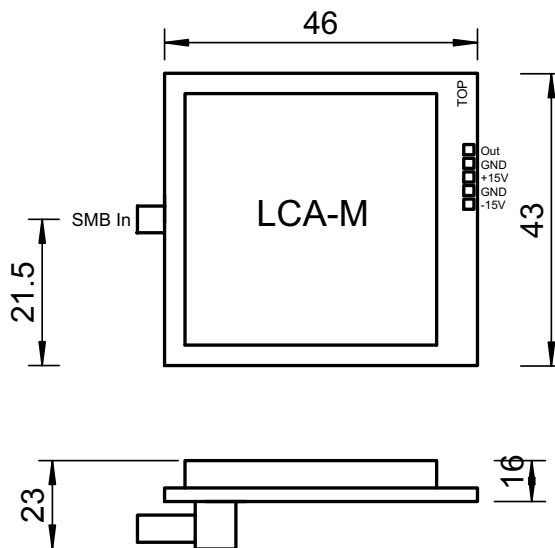


LCA-M Miniature Amplifier General Datasheet



Input	DC Input Impedance	50 Ohm (virtual) // 5 pF
Output	Output Voltage	± 10 V (@ ≥ 1 MOhm load)
	Output Impedance	50 Ohm (designed for ≥ 1 MOhm load)
	Max. Output Current	± 10 mA (for linear amplification)
Power Supply	Supply Voltage	± 15 V
	Supply Current	± 30 mA typ. (depends on operating conditions, recommended power supply capability minimum ± 100 mA)
	Physical Properties	
	Weight	20 g (0.044 lbs)
	Dimensions	ca. 46 mm x 43 mm x 13 mm
Temperature Range	Storage Temperature	- 40 ... + 100 °C
	Operating Temperature	0 ... + 60 °C
Absolute Maximum Ratings	Input Voltage	± 5 V
	Power Supply Voltage	± 20 V
Connectors	Input	SMB (SMA available on request)
	Output and Power Supply	2.54 mm board connector (solder pads or cable pigtail available on request)
	Pin 1:	Output
	Pin 2:	GND
	Pin 3:	+ 15V
	Pin 4:	GND
	Pin 5:	- 15V

Dimensions
All dimensions in mm
unless otherwise noted



Electro Optical Components, Inc.

5460 Skylane Boulevard, Santa Rosa, CA 95403

Phone: (707) 568-1642 • FAX: (707) 568-1652

www.eoc-inc.com