

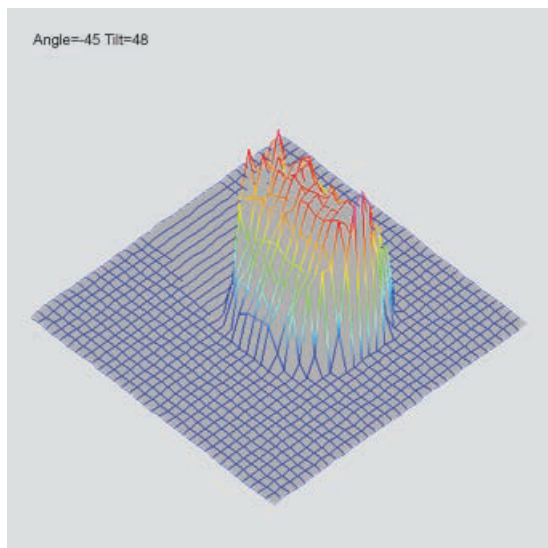
Collimator IMK-0714-R-K-DL3147-060

Order Number: 1106000004

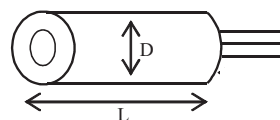


Applications

- Positioning
- Construction laser applications
- Light barriers
- Levelling



Typical Beam Profile



Dimensions according to DIN ISO 2768 f if not specified otherwise. Drawing not in scale

D (mm)	7
L (mm)	14

Parameter @ Tc = 25 °C	Min.	Typ.	Max.
Wave length	n. a.	650 nm	660 nm
Threshold current	n. a.	20 mA	35 mA
Operating current	n. a.	30 mA	45 mA
Operating voltage	n. a.	2.3 V	2.6 V
Monitor diode current	0.08 mA	0.2 mA	0.4 mA
Optical power	n. a.	2 mW	2.8 mW
Operating temperature	-10 °C	n. a.	70 °C
Storage temperature	-25 °C	n. a.	85 °C
Beam diameter @ 1/e ²		Ø 2 mm ²	
Beam deviation			15 mrad
Beam divergence			0.5 mrad
Laser protection class	3B		
Lens type	Aspherical plastic lens		
Casing	Aluminium natural colour		
PINOUT	1		
Suitable laser diode controllers	IMS-WKL1-01, IMS-5/250J-1		

Compliant with RoHS-requirements (2002/95/EG vom 27.01.2003)

Note: The above product specifications are subject to change without notice.



Electro Optical Components, Inc.

5460 Skylane Boulevard, Santa Rosa, CA 95403

Phone: (707) 568-1642 • FAX: (707) 568-1652