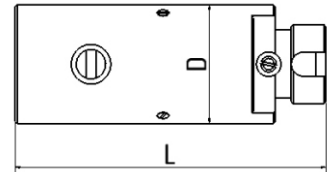


Fiber Collimator with FC-Connector

Information

- LWL connection for FC-PC connectors (0° polish)
- Coating of lense: $R_{AVG} < 0,5\%$ from 400-700nm

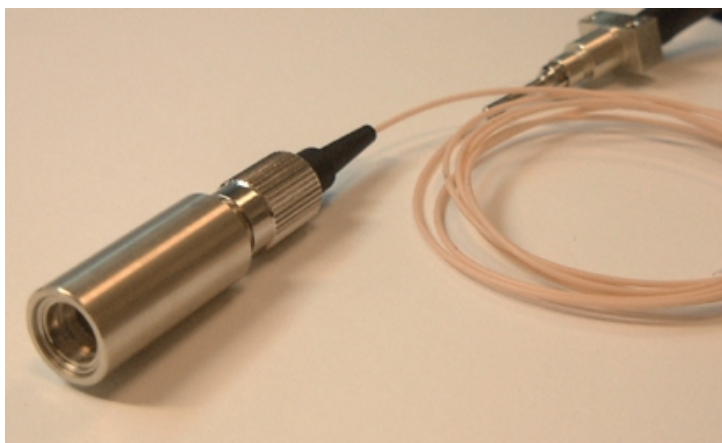


Dimensions according to DIN ISO 2768 f if not specified otherwise. Drawing not in scale

D (mm)	12 H7
L (mm)	31.50

Parameter @ $T_c = 25^\circ\text{C}$, 4/125 μm fiber	Min.	Typ.	Max.
Focal length f'		20 mm	
Numerical aperture N.A.		0.18	
Clear aperture			7.4 mm
Collimated beam diameter @ $1/e^2$		3.4 mm	
Beam divergence			0.3 mrad
Focused beam diameter @ $1/e^2$			
- at distance 0.5 m		0.2 mm	
- at distance 1.0 m		0.35 mm	
- at distance 5.0 m		1.40 mm	

Compliant with RoHS-requirements (2002/95/EG vom 27.01.2003)



Fiber Colli with Pigtail



Fiber Colli with Pigtail

Note: The above product specifications are subject to change without notice.