

Fiber Optic Fault Locators and Accessories

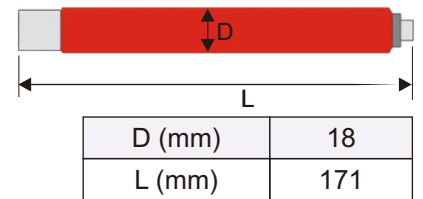


FIBERPOINT® 250

Part Number: 1401000002



Patented universal port 2.5 mm



- Applications:**
- The compact design of the visual fault locator is very suitable for **daily use** in all fiber optic applications e.g. **in the field, in industrial environment as well as in laboratory.**
 - To check **singlemode/multimode** optical fibers and other fiber optic components on faults.
 - **Patching** of fibers.

Parameter	Min.	Typ.	Max.
Wavelength		635 nm	
Operation temperature	- 10 °C		45 °C
Storage temperature	- 40 °C		70 °C
Fiber coupled power	(Singlemode fiber 9/125 µm)	500 µW	700 µW
	(Multimode fiber 50/125 µm)	500 µW	800 µW
Optical output power			1 mW
Operation current		40 mA	
Retention force for ferrule		1 - 2 N	
Weight incl. batteries		100 g	
Operation time - one battery pack ¹ (Pulsed mode)		40 hours	
Battery type		AAA	
Operation mode	pulsed mode: frequency 2 - 3 Hz		
Laser protection class	2		
Suitable ferrule 2.5 mm	DIN, E2000, FC, SC, ST		

- Included in delivery:**
- Dust cap
 - One battery pack
 - Instruction manual
 - "Quadrosafe" economy plastic shipping box

Accessories (not included): - Adapters please see page 8/9 this brochure

- Feature:**
- Private labelling is available instead of stamping "FIBERPOINT® 250"
 - One-time charge applies
 - Minimum order quantity applies

Notes: Do not use rechargeable batteries.

Compliant with RoHS-requirements (2002/95/EG vom 27.01.2003)

The above product specifications are subject to change without notice.

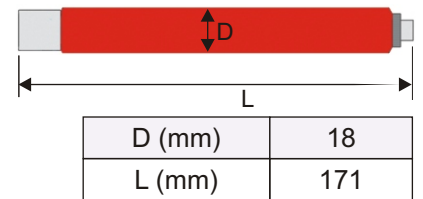
¹⁾ Battery: VARTA Industrial Alkaline No. 4003; 1.5 V; AAA; LR03 Micro; AM4; MN2400

FIBERPOINT® 250D

Part Number: 1401000013



Patented universal port 2.5 mm



- Applications:**
- The compact design of the visual fault locator is very suitable for **daily use** in all fiber optic applications e.g. **in the field, in industrial environment as well as in laboratory.**
 - To check **singlemode/multimode** optical fibers and other fiber optic components on faults.
 - **Patching** of fibers.

Parameter	Min.	Typ.	Max.
Wavelength		635 nm	
Operation temperature	- 10 °C		45 °C
Storage temperature	- 40 °C		70 °C
Fiber coupled power	(Singlemode fiber 9/125 µm)	500 µW	700 µW
	(Multimode fiber 50/125 µm)	500 µW	800 µW
Optical output power			1 mW
Operation current		40 mA	
Retention force for ferrule		1 - 2 N	
Weight incl. batteries		100 g	
Operation time - one battery pack ¹ (Pulsed mode)		40 hours	
Battery type		AAA	
Operation mode	continuous wave		
Laser protection class	2		
Suitable ferrule 2.5 mm	DIN, E2000, FC, SC, ST		

- Included in delivery:**
- Dust cap
 - One battery pack
 - Instruction manual
 - “Quadrosafe” economy plastic shipping box

Accessories (not included): - Adapters please see page 8/9 this brochure

- Feature:**
- Private labelling is available instead of stamping “FIBERPOINT® 250”
 - One-time charge applies
 - Minimum order quantity applies

Notes: Do not use rechargeable batteries.

Compliant with RoHS-requirements (2002/95/EG vom 27.01.2003)

The above product specifications are subject to change without notice.

¹⁾ Battery: VARTA Industrial Alkaline No. 4003; 1.5 V; AAA; LR03 Micro; AM4; MN2400

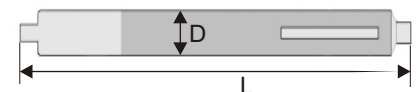
FIBERPOINT® 250MD

Part Number: 1400000030Q / 1400000030E



Patented universal port 2.5 mm

- Applications:**
- The compact design of the visual fault locator is very suitable for **daily use** in all fiber optic applications e.g. **in the field, in industrial environment as well as in laboratory.**
 - To check **singlemode/multimode** optical fibers and other fiber optic components on faults.
 - **Patching** of fibers.



D (mm)	12
L (mm)	167

Parameter	Min.	Typ.	Max.
Wavelength		635 nm	
Operation temperature	- 10 °C		45 °C
Storage temperature	- 40 °C		70 °C
Fiber coupled power	(Singlemode fiber 9/125 μm)	500 μW	700 μW
	(Multimode fiber 50/125 μm)	500 μW	800 μW
Optical output power			1 mW
Operation current		40 mA	
Retention force for ferrule		1 - 2 N	
Weight incl. batteries		60 g	
Operation time - one battery pack ¹ (Pulsed mode)		40 hours	
Battery type		AAA	
Operation mode	continuous wave; pulsed mode: frequency 2 - 3 Hz		
Laser protection class	2		
Suitable ferrule 2.5 mm	DIN, E2000, FC, SC, ST		

- Included in delivery:**
- Dust cap
 - One battery pack
 - Instruction manual

Accessories (not included): - Adapters please see page 8/9 this brochure

Order number:

- 1400000030Q: Individually packed in "Quadrosafe"
- 1400000030E: Individually packed in etui style plastic packaging

Feature:

- Private labelling is available
- Minimum order quantity applies

Notes: Do not use rechargeable batteries.

Compliant with RoHS-requirements (2002/95/EG vom 27.01.2003)
 The above product specifications are subject to change without notice.

¹⁾ Battery: VARTA Industrial Alkaline No. 4003; 1.5 V; AAA; LR03 Micro; AM4; MN2400

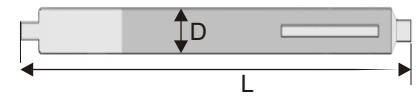
FIBERPOINT® 250G

Part Number: 1401000026A



Patented universal port 2.5 mm

- Applications:**
- The compact design of the visual fault locator is very suitable for **daily use** in all fiber optic applications e.g. **in the field, in industrial environment as well as in laboratory.**
 - To check **singlemode/multimode** optical fibers and other fiber optic components on faults.
 - **Patching** of fibers.



D (mm)	12
L (mm)	~180

Parameter	Min.	Typ.	Max.
Wavelength		532 nm	
Operation temperature	20 °C		30 °C
Storage temperature	- 40 °C		70 °C
Fiber coupled power	(Singlemode fiber 9/125 µm)	500 µW	700 µW
	(Multimode fiber 50/125 µm)	500 µW	800 µW
Optical output power			1 mW
Operation current		300 mA	
Retention force for ferrule		1 - 2 N	
Weight incl. batteries		60 g	
Battery type		AAA	
Operation mode	pulsed mode: frequency 2 - 3 Hz		
Laser protection class	2M		
Suitable ferrule 2.5 mm	DIN, E2000, FC, SC, ST		

- Included in delivery:**
- Dust cap
 - One battery pack
 - Instruction manual
 - "Quadrosafe" economy plastic shipping box

Accessories (not included): - Adapters please see page 8/9 this brochure

- Feature:**
- Private labelling is available
 - Minimum order quantity applies

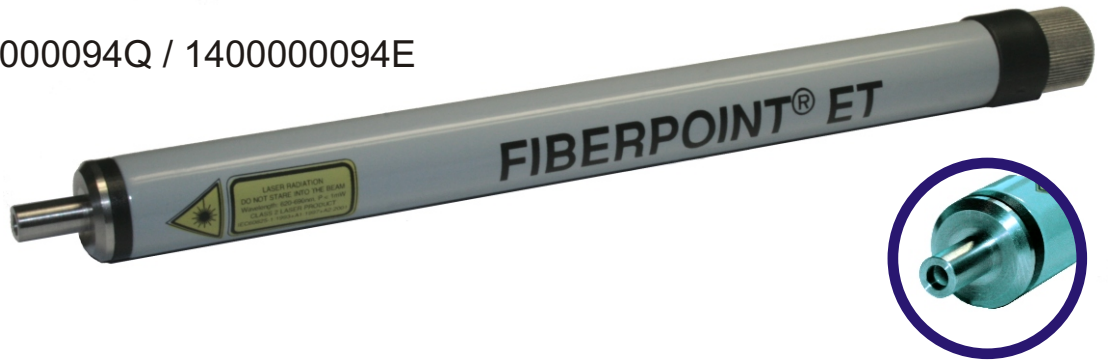
Notes: Do not use rechargeable batteries.

Compliant with RoHS-requirements (2002/95/EG vom 27.01.2003)
 The above product specifications are subject to change without notice.

¹⁾ Battery: VARTA Industrial Alkaline No. 4003; 1.5 V; AAA; LR03 Micro; AM4; MN2400

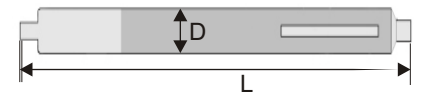
FIBERPOINT® ET

Part Number: 1400000094Q / 1400000094E



Patented universal port 2.5 mm

- Applications:**
- The compact design of the visual fault locator is very suitable for **daily use** in all fiber optic applications e.g. **in the field, in industrial environment as well as in laboratory.**
 - To check **singlemode/multimode** optical fibers and other fiber optic components on faults.
 - **Patching** of fibers.



D (mm)	12.1
L (mm)	156,5

Parameter	Min.	Typ.	Max.
Wavelength	650 nm	655 nm	660 nm
Operation temperature	- 10 °C		45 °C
Storage temperature	- 40 °C		70 °C
Fiber coupled power	(Singlemode fiber 9/125 μm)	200 μW	350 μW
	(Multimode fiber 50/125 μm)	200 μW	600 μW
Optical output power			1 mW
Operation current		35 mA	
Retention force for ferrule		1 - 2 N	
Weight incl. batteries		70 g	
Operation time - one battery pack ¹ (Pulsed mode)		40 hours	
Battery type		AAA	
Operation mode	continuous wave; pulsed mode: frequency: 2 - 3 Hz		
Laser protection class	2		
Suitable ferrule 2.5 mm	DIN, E2000, FC, SC, ST		

- Included in delivery:**
- Dust cap
 - One battery pack
 - Instruction manual

Accessories (not included): - Adapters please see page 8/9 this brochure

- Order number:**
- 1400000094Q: Individually packed in “Quadrosafe”
 - 1400000094E: Individually packed in etui style plastic packaging

- Feature:**
- Private labelling is available
 - Minimum order quantity applies
 - For resellers only

Notes: Do not use rechargeable batteries.

Compliant with RoHS-requirements (2002/95/EG vom 27.01.2003)

The above product specifications are subject to change without notice.

¹⁾ Battery: VARTA Industrial Alkaline No. 4003; 1.5 V; AAA; LR03 Micro; AM4; MN2400

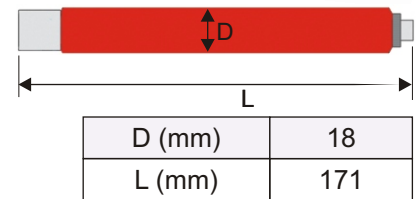
FIBERPOINT® 250HP / HPD

Part Number: 1401000007 / 1401000012



- Applications:**
- The compact design of the visual fault locator is very suitable for **daily use** in all fiber optic applications e.g. **in the field, in industrial environment as well as in laboratory.**
 - To check **singlemode/multimode** optical fibers and other fiber optic components on faults.
 - **Patching** of fibers.

Patented universal port 2.5 mm



Parameter @ Tc = 25°C		Min.	Typ.	Max.
Wavelength		630 nm	638 nm	642 nm
Operation temperature		- 10 °C		45 °C
Storage temperature		- 40 °C		70 °C
Fiber coupled power	(Singlemode fiber 9/125 µm)	1400 µW		1700 µW
	(Multimode fiber 50/125 µm)	1400 µW		2000 µW
Optical output power				5 mW
Operation current			40 mA	
Retention force for ferrule			1 - 2 N	
Weight incl. batteries			100 g	
Battery type			AAA	
Operation mode		pulsed mode: frequency 2 - 3 Hz (250HP), cw (250HPD)		
Laser protection class		3R		
Suitable ferrule 2.5 mm		DIN, E2000, FC, SC, ST		

- Included in delivery:**
- Dust cap
 - One battery pack
 - Instruction manual
 - “Quadrosafe” economy plastic shipping box

Accessories (not included): - Adapters please see page 8/9 this brochure

- Feature:**
- Private labelling is available instead of stamping “FIBERPOINT® 250”
 - One-time charge applies
 - Minimum order quantity applies

Notes: Do not use rechargeable batteries.

Compliant with RoHS-requirements (2002/95/EG vom 27.01.2003)

The above product specifications are subject to change without notice.

¹⁾ Battery: VARTA Industrial Alkaline No. 4003; 1.5 V; AAA; LR03 Micro; AM4; MN2400

Accessoires

Adapter 2.50 mm to 1.25 mm

Part Number: 1400000070

Applications: - Adapts patented **2.50 mm FIBERPOINT®** connection to a **1.25 mm** connection. Consequently you can check most of the popular fiber connector types with just one fiber optic fault locator.



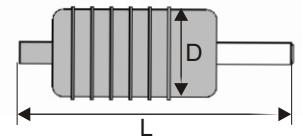
FIBERPOINT® 250 with Adapter



FIBERPOINT® 250MD with Adapter



1.25 mm side



D (mm)	8.5
L (mm)	26

Parameter	Specification
Side of the FIBERPOINT®	2.50 mm SM-ferrule
Side of the fiber	1.25 mm connection for LC, MU, F3000 etc.
Attenuation	< 1.0 dB
Weight	10 g

Included in delivery: - Dust cap on both sides
- Plastic foil bag packaging

Compliant with RoHS-requirements (2002/95/EG vom 27.01.2003)

Note: The above product specifications are subject to change without notice.

Adapter for POF (polymer optical fiber)

Part Number: 1400000078



Applications: - Adapts the patented **2.50 mm FIBERPOINT®** connection to a **1.5 and 2.2 mm outer diameter polymer optical fiber** connection. Consequently you can check both popular fiber diameters with one fiber optic fault locator.

Parameter	Specification
Side of the FIBERPOINT®	2.50 mm SM-ferrule
Side of the fiber	1.5 and 2.2 mm
Attenuation	typ. < 1.0 dB
Weight	8.5 g

Included in delivery: - Dust cap on both sides
- Plastic foil bag packaging

Adapter for SMA

Part Number: 1400000088



Applications: - Adapts patented **2.50 mm FIBERPOINT®** connection to **SMA 905** connection. Consequently you can check both popular fiber connector types with just one fiber optic fault locator.

Parameter	Specification
Side of the FIBERPOINT®	2.50 mm SM-ferrule
Side of the fiber	SMA 905 connector
Attenuation	typ. < 1.0 dB
Weight	3.5 g

Included in delivery: - Dust cap on both sides
- Plastic foil packaging

Compliant with RoHS-requirements (2002/95/EG vom 27.01.2003)

Note: The above product specifications are subject to change without notice.

IMM Photonics GmbH

Ohmstraße 4
85716 Unterschleißheim
Germany

Tel.: +49 89 321412-0

Fax: +49 89 321412-11

www.imm-photonics.de
sales@imm-photonics.de

Release: 02-2011
© by IMM Photonics GmbH

