

## DL-4038-021

Wellenlänge: 635nm (typ.)  
 Geringer Schwellstrom: 35mA (typ.)  
 Max. Ausgangsleistung: 10mW  
 Niedrige Betriebsspannung: 2,2V typ.

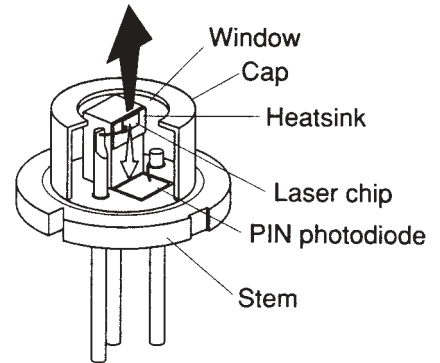


### Anwendungsgebiete:

Barcodescanner  
 Laserdrucker  
 Linienmodule

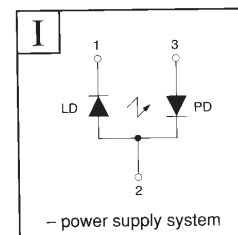
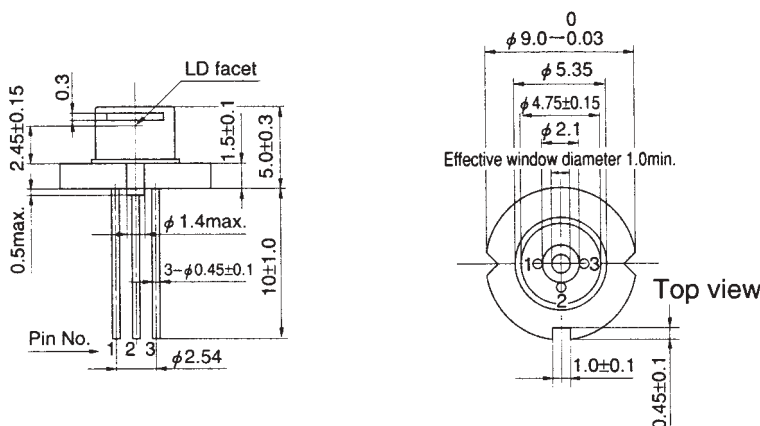
### Maximalwerte

Parameter		Symbol	Wert	Einheit
Ausgangsleistung	CW	Po	10	mW
	Laser	VR	2	V
Sperrspannung	Laser	VR	2	V
	PIN	VR	30	V
Betriebstemperatur		Topr	-10...+40	°C
Lagertemperatur		Tstr	-40...+85	°C



### Elektrische und optische Eigenschaften bei 25°C

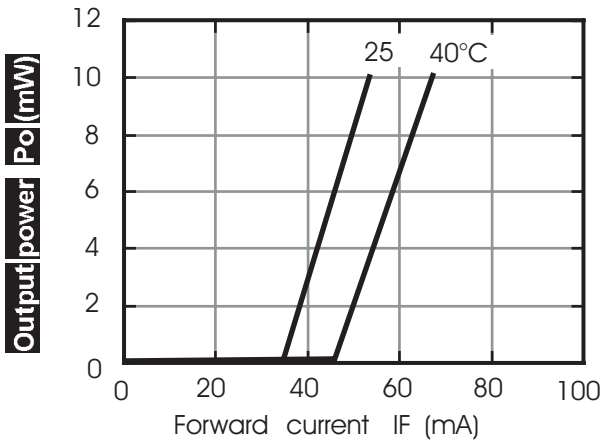
Parameter		Symbol	Betriebsbedingung	Min.	Typ.	Max.	Einheit
Schwellstrom		I <sub>th</sub>	CW	---	35	60	mA
Betriebsstrom		I <sub>op</sub>	Po=10mW	---	55	80	mA
Betriebsspannung		V <sub>op</sub>	Po=10mW	---	2,2	2,4	V
Wellenlänge			Po=10mW	---	635	645	nm
Strahl- divergenz	Senkrecht	⊥	---	25	33	40	deg.
	Parallel		---	6	8	10	deg.
Strahl- abweichung	Senkrecht	⊥	---	---	---	+/-3	deg.
	Parallel		---	---	---	+/-3	deg.
Differentieller Wirkungsgrad		dPo/dI <sub>op</sub>	Po=10mW	---	0,5	---	mW/mA
Monitordiodenstrom		I <sub>m</sub>	Po=10mW	0,05	0,15	---	mA
Astigmatismus		As	Po=10mW	---	8	---	μm



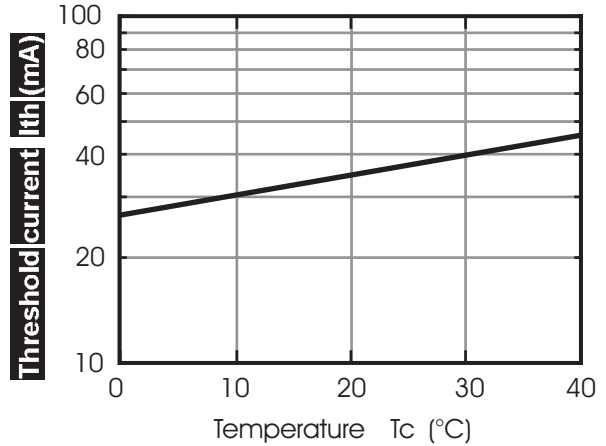
# DL-4038-021

## Characteristics

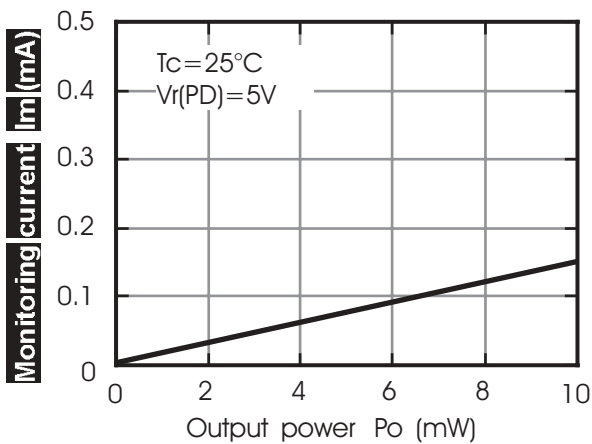
Output power vs. Forward current



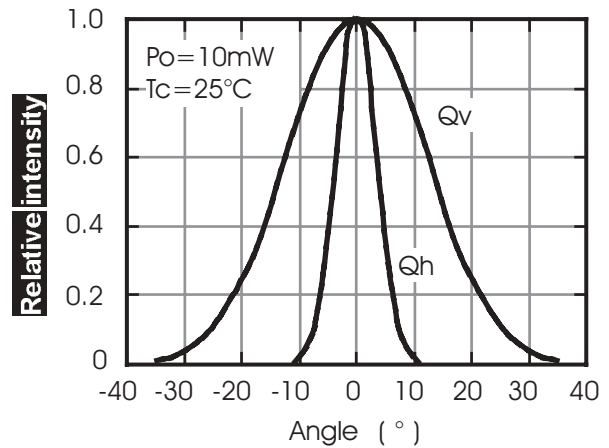
Threshold current vs. Temperature



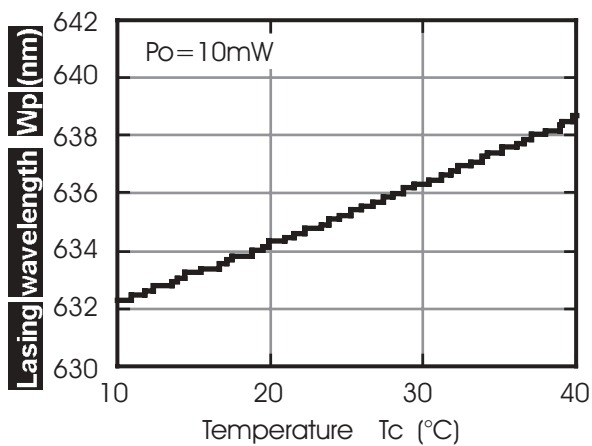
Monitoring current vs. Output power



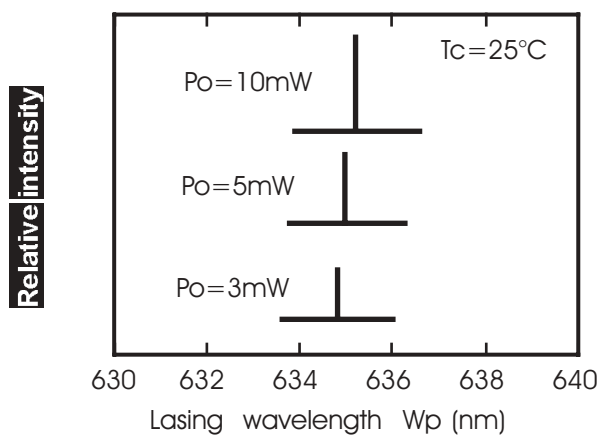
Beam divergence



Lasing wavelength vs. Temperature



Lasing wavelength vs. Output power



This is typical data and it may not represent all products.