

LIM-054-#

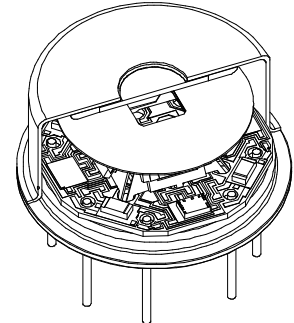
Quad channel pyroelectric multicolor detector with integrated beamsplitter and CMOS preamplifier (PyroMid®)

Description: LIM-054-#

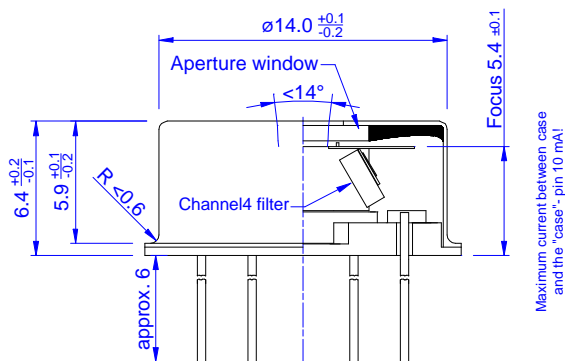
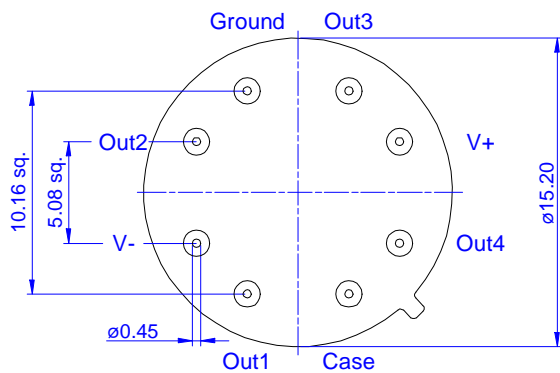
[# = extension code]

quad color, potential-free TO8 housing, with integrated micro pyramid beamsplitter; current mode with micro power OpAmp; feedback R 24GOhm ±20% // C 0.20±0.1pF; high gain

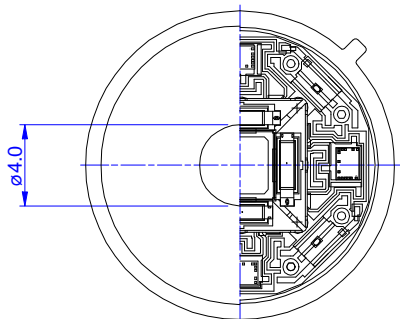
PyroMid® detectors are State-of-the-art, cost effective, multicolor detectors for virtually any infrared application.



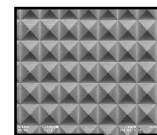
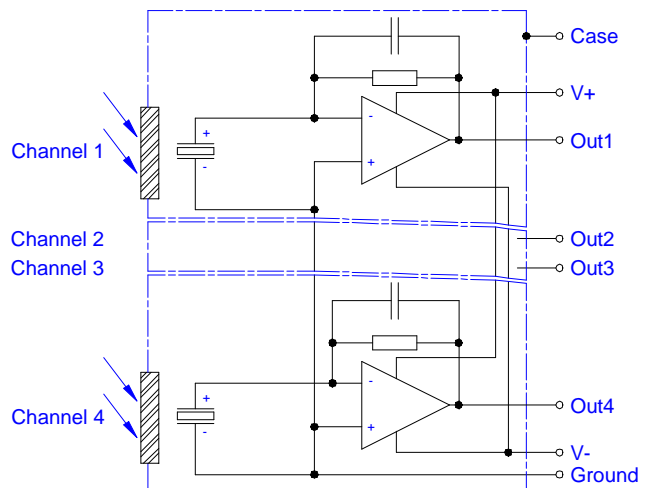
Housing:



TO8 / 0.6" 8Pin

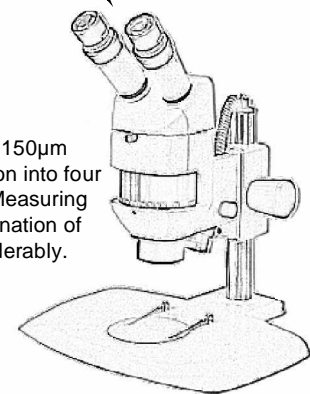


Pin assignment:



SEM photograph of a micro pyramid beamsplitter

More than 200 micro pyramids (150µm pitch) divide the incident radiation into four spectral channels (patented). Measuring errors by an asymmetrical illumination of the aperture are reduced considerably.



Multi-color Products

InfraTec GmbH
Infrarotsensorik und Messtechnik
Gostritzer Str.61-63
01217 Dresden / Germany
E-Mail: sensor@InfraTec.de
http://www.InfraTec.de

distributed by:

ELECTRO OPTICAL COMPONENTS, Inc.
5460 Skylane Blvd.
Santa Rosa, California 95403

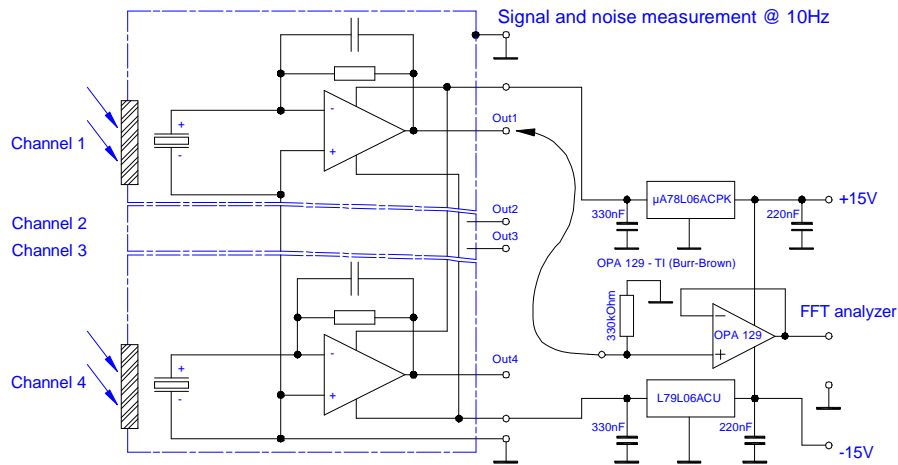


Tel: 707-568-1642
Fax: 707-568-1652
E-Mail: info@eoc-inc.com
http://www.eoc-inc.com

LIM-054-#

Quad channel pyroelectric multicolor detector
with integrated beamsplitter and CMOS preamplifier (PyroMid®)

Test circuit:



Parameters:

Aperture size	nom	2.8 mm sq.
Element size / type	nom	2.2x1.3 mm ² lithium tantalate with black layer
Beamsplitter	nom	array of micro pyramids
Thermal time constant	typ	250 ms
Feedback resistor	nom	24 GOhm ±20%
Feedback capacitor	nom	0.2±0.1 pF
Polarity	nom	negative signal by positive IR flux change
Voltage responsivity {500K, 10Hz, 25°C, without window}	min	3,000 V/W
Noise density {10Hz, BW 1Hz, 25°C}	max	24 µV/Hz ^{1/2}
Detectivity {500K, 10Hz, 1Hz, 25°C, without window}	min	3.5*10 ⁷ cmHz ^{1/2} /W
CMOS operational amplifier	nom	OpAmp2 (for characteristics see application note)
Supply voltage V ⁺ - V ⁻	max	16 V
Operating supply voltage V ⁺ / V ⁻		+2.2 ... 8.0 V / -2.2 ... -8.0 V
Recommended supply voltage	nom	V ⁺ = +5 V; V ⁻ = -5 V
Supply current {output load 1MOhm}	max	150 µA
Offset voltage {25°C; output load 1MOhm}		-5 mV ... +5 mV
Optimal output load	nom	330 kOhm
Absolute output current	max	± 0.4 mA
Potential of detector case	nom	selectable potential between -8 ... +8V to Ground {EMC requires low-impedance coupling}
Operating / Storage temperature	nom	-25 ... +85°C
Aperture window		CaF ₂ 0.4mm thick, customized window upon request.
Channel filters		Combinations of all InfraTec standard narrow band pass filters are available. Customized filters upon request.

InfraTec reserves the right to change these specifications at any time without notification!

© InfraTec GmbH, October 18th 2005

InfraTec GmbH

Infrarotsensorik und Messtechnik
Gostritzer Str.61-63

01217 Dresden / Germany

E-Mail: sensor@InfraTec.de

http://www.InfraTec.de

distributed by:

ELECTRO OPTICAL COMPONENTS, Inc.

5460 Skyline Blvd.

Santa Rosa, California 95403

Tel: 707-568-1642

Fax: 707-568-1652

E-Mail: info@eoc-inc.com

http://www.eoc-inc.com

