



Electro Optical Components, Inc.

5464 Skylane Boulevard, Suite D, Santa Rosa, CA 95403

Toll Free: 855-EOC-6300

www.eoc-inc.com | info@eoc-inc.com



MCB Series 500ps Microchip Lasers



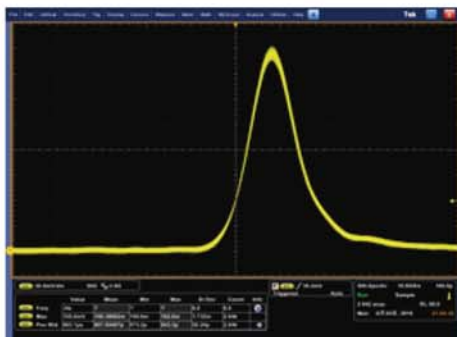
Key Features

- ◆ Pulse width down to 500ps
- ◆ Pulse energy up to 170μJ
- ◆ Repetition rates up to 1kHz
- ◆ Excellent beam quality
- ◆ Sealed design, high reliability

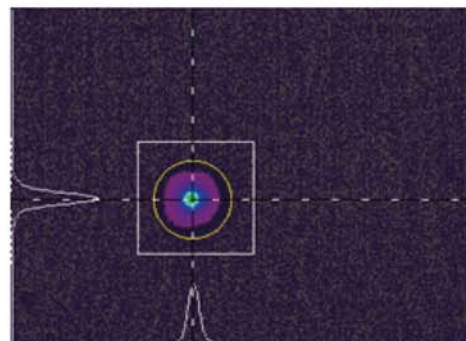
Applications

- LIBS
- LIPS
- LIMS
- Seed Laser
- Biomedical
- Micromachining
- OPO Pumping Source
- Laser Ultrasound Testing
- Laser Induced Fluorescence
- Nonlinear Optical Measurement

MCB Series								
Wavelength (nm)	1064		532		355		266	
Repetition rate (kHz)	0.1	1	0.1	1	0.1	1	0.1	1
Average power (mW)	17	150	8	70	4	30	1	8
Pulse energy (μJ)	170	150	80	70	40	30	10	8
Pulse width (ns)	0.55		0.5		0.5		0.5	
Power stability (8h)	±3%		±3%		±3%		±3%	
Beam profile	TEM ₀₀		TEM ₀₀		TEM ₀₀		TEM ₀₀	
Beam divergence full angle (mrad)	Horizontal @1/e ²		Typ.4		Typ.3		Typ.3	
	Vertical @1/e ²		Typ.4		Typ.3		Typ.3	
Polarization	> 100:1		> 100:1		> 100:1		> 100:1	
System parameters								
Supply power voltage	100-240 VAC, 50/60 Hz							
Modulation input	TTL 0-5V, SMA input							
Control interface	RS232, USB							
Power consumption (W)	<15	<25	<20	<30	<25	<35	<30	<40
Power dimensions (mm)	146×76×150 (W×H×L)							
Laser head dimensions (mm)	45×30×120 (W×H×L)							
Operation temperature (°C)	15-35							
Storage temperature (°C)	0-50							



Typical Pulse



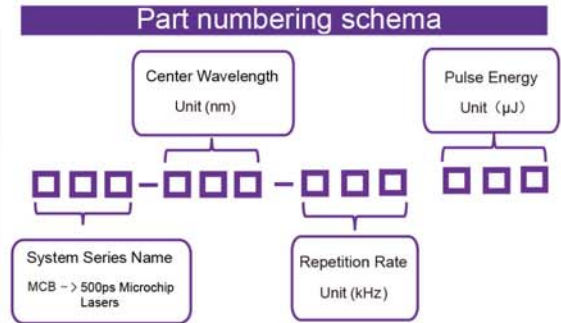
Beam Profile

Ordering information

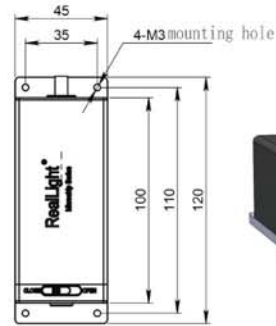
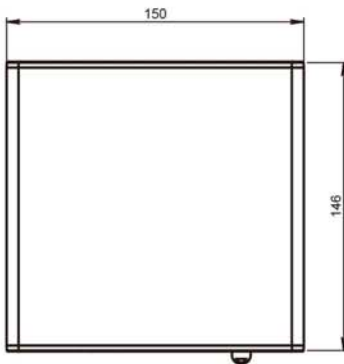
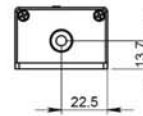
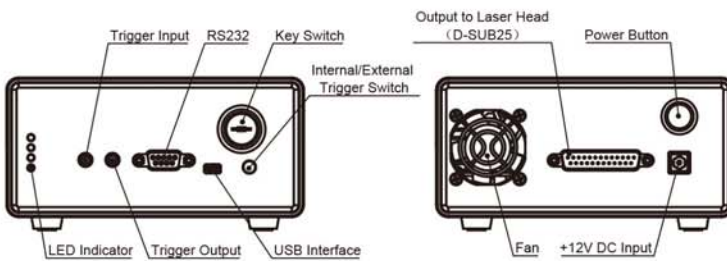
MCB Series Model List			
Wavelength (nm)	Part Number	Repetition rate (kHz)	Pulse energy (μJ)
1064	MCB-1064-0.1-170	0.1	170
	MCB-1064-1-150	1	150
532	MCB-532-0.1-080	0.1	80
	MCB-532-1-070	1	70
355	MCB-355-0.1-040	0.1	40
	MCB-355-0.1-030	1	30
266	MCB-266-0.1-010	0.1	10
	MCB-266-0.1-008	1	8

* All specifications are subject to change without prior notice

Part numbering schema



Mechanical Specifications



Unit: mm