



**Electro Optical Components, Inc.**

5464 Skylane Boulevard, Suite D, Santa Rosa, CA 95403

Toll Free: 855-EOC-6300

[www.eoc-inc.com](http://www.eoc-inc.com) | [info@eoc-inc.com](mailto:info@eoc-inc.com)



## Fiber Probe Couplers for FTIR-spectrometers



**art photonics**



### FlexiSpec<sup>®</sup>



Variety of fiber probes coupling  
with any FTIR spectrometer

Compatible or customized for FTIR  
sample chamber or external port

Mirror optics for broad spectral range

SMA-terminated in/out ports for any  
fiber probe with SMA-connectors

Pre-aligned for distinct FTIR-models  
or adjustable to optimize coupling

**FlexiSpec<sup>®</sup>** fiber optic probes can be coupled with any FTIR spectrometer by standard fiber coupler produced by manufacturers of FTIR spectrometers and FTIR accessories. **art photonics** can provide customized fiber couplers / launches for various FTIR-models – with or without sample chamber. FTIR coupling with **FlexiSpec<sup>®</sup>** probes eliminates the need of samples preparation and enables remote monitoring of molecular reactions in-line.

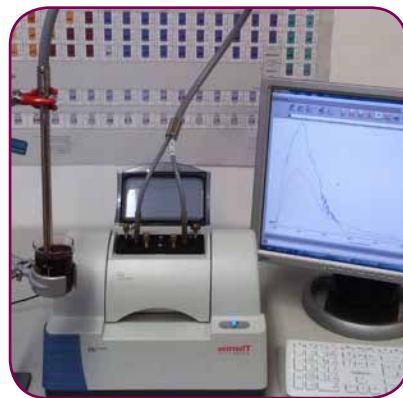
#### Applications:

- Easy coupling of any fiber probe to any FTIR spectrometer - to enable *in-line* applications
- Upgrade of lab FTIR-models to remote process-spectroscopy
- Can be used as any other accessories in sample chamber



### iFC1 – Fiber Coupler

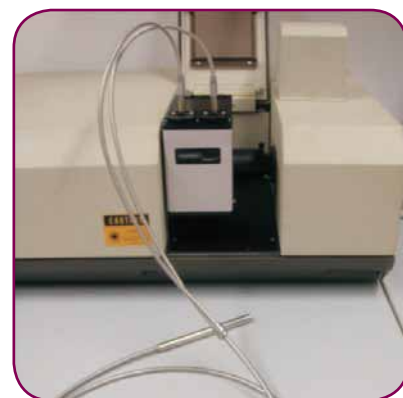
Designed for different fiber probes, iFC1 coupler connects them with FTIR-spectrometer iS5 from Thermo Fisher using iD1 accessories platform. Mirror optics covers a broad spectral range and adjustable for SMA-terminated input/output ports.



### FiberMate-2™

from Harrick Scientific Inc.

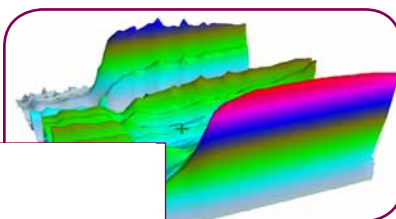
Equipped with large ellipsoidal mirrors, the FiberMate2™ efficiently couples fiber probe with different models of FTIR-spectrometers. The FiberMate2™ utilizes mirror optics coupled to two SMA connectors. It is equipped with PermaPurge™ to maintain the system purge.



### FT-FiberSpec

dual mirror fiber coupler

Two identical mirror couplers are designed to focus FTIR-beam to fiber probe input or refocus it from the probe output to FTIR-detector. Can be installed directly at sample chamber windows, at external FTIR port or be fixed with a customized holder inside sample chamber. Mirror optics covers a broad spectral range and can be adjusted to SMA-connector position to maximize coupling efficiency. Mirrors can rotate around beam axis for convenient probe connection to FTIR at any angle.



Fiber Couplers can couple any FTIR-spectrometer with various FlexiSpec® probes and upgrade it for in-line ATR-, Transmission or Reflection process-spectroscopy in a broad spectral range.

