

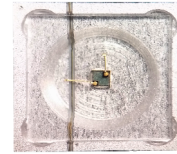


UV-C LED Sensor GUVCL-S10GD



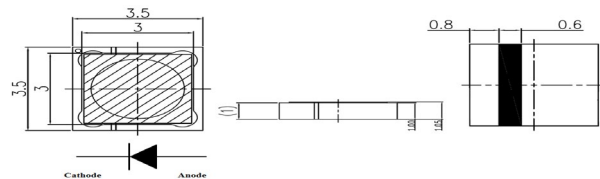
<Preliminary version>

- Features**
- Aluminium Gallium Nitride Based Material
 - Schottky-type Photodiode
 - Photovoltaic Mode Operation
 - Good Solar Blindness



- Applications**
- UV-C LED Monitoring (265,270,280nm)**
 - Pure UV-C Monitoring
 - Sterilization Lamp Monitoring

Outline Diagrams and Dimensions



Absolute Maximum Ratings

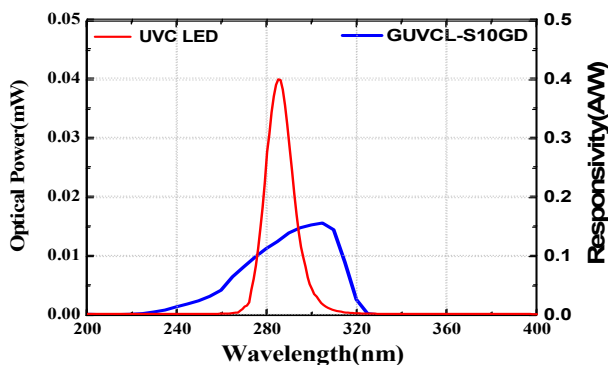
Parameter	Symbol	Min.	Max.	Unit	Remark
Storage Temperature	T _{st}	-40	90	°C	
Operating Temperature	T _{op}	-30	85	°C	
Reverse Voltage	V _{r, max.}		3	V	
Forward Current	I _{f, max.}		1	mA	
Optical Source Power Range	P _{opt}	0.1μ	100m	W/cm ²	UVC LED
Soldering Temperature	T _{sol}		260	°C	within 10 sec.

※Notice: apply to us in the case that Optical Source Power is over 100,000μW/cm².

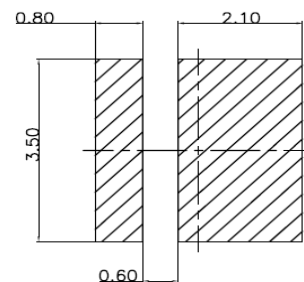
Characteristics (at 25°C)

Parameter	Symbol	Min.	Typ.	Max.	Unit	Test Conditions
Dark Current	I _d			1	nA	V _r = 0.1 V
Photo Current	I _{ph}	135	150	165	nA	UVC LED, 1mW/cm ²
Temperature Coefficient	I _{tc}		0.1		%/°C	UVC LED
Responsivity	R		0.12		A/W	λ = 280 nm, V _r = 0 V
Spectral Detection Range	λ	230		320	nm	10% of R
Active area			0.076		mm ²	

Responsivity Curve



Solder PAD (mm)



Caution

ESD can damage the device hence please avoid ESD.