



# Electro Optical Components, Inc.

5464 Skylane Boulevard, Suite D, Santa Rosa, CA 95403

Toll Free: 855-EOC-6300

[www.eoc-inc.com](http://www.eoc-inc.com) | [info@eoc-inc.com](mailto:info@eoc-inc.com)



## MCB Series 500ps Microchip Laser



### Key Features

- ◆ Single pulse energy up to 180μJ
- ◆ Spatial mode TEM<sub>00</sub>
- ◆ Sealed package, high reliability
- ◆ Polarization-stable

### Technical Specifications

Optical Parameters					
Wavelength (nm)		1064	532	355	266
Repetition rate (kHz)		0.1	0.1	0.1*	0.1*
Average power (mW)		18	8	3.6	1
Pulse energy (μJ)		180	80	36	10
Pulse width (ps)		500			
Power stability (8h)		±3%			
Beam profile		TEM <sub>00</sub>			
Full angle divergence Typ. (mrad)	Horizontal @1/e <sup>2</sup>	≤5	≤3	≤2	≤2
	Vertical @1/e <sup>2</sup>	≤5	≤3	≤2	≤2
Polarization		>100:1			
System Parameters					
Supply power voltage		100-240 VAC, 50/60 Hz			
Modulation input		TTL 0-5V, SMA input			
Control interface		RS232, USB			
Power consumption (W)		≤15	≤20	≤25	≤30
Power dimensions (W×H×L,mm)		168×88×140/168×88×220*			
Laser head dimensions (W×H×L,mm)		45×30×120			
Operation temperature (°C)		15-35			
Storage temperature (°C)		0-60			

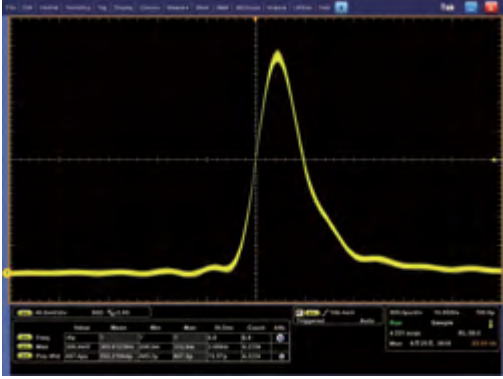
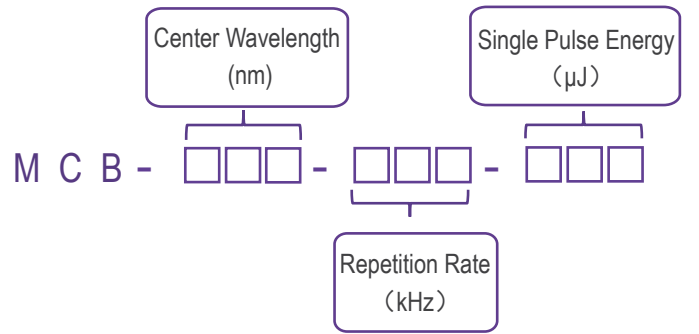
\*1. Laser head features side laser outlet, please see mechanical drawings for more details.

2. Built-in beam expander and collimator are available upon request, and divergence can be less than 2mrad.

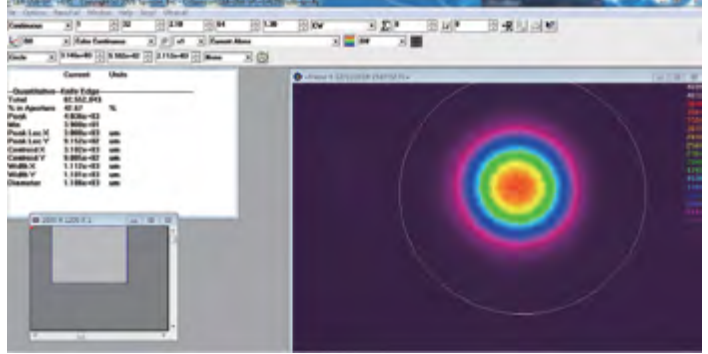
## Order Information

Wavelength (nm)	Part Number	Repetition rate (kHz)	Pulse energy (μJ)
1064	MCB-1064-0.1-180	0.1	180
532	MCB-532-0.1-080	0.1	80
355	MCB-355-0.1-036	0.1	36
266	MCB-266-0.1-010	0.1	10

## Part Numbering Schema

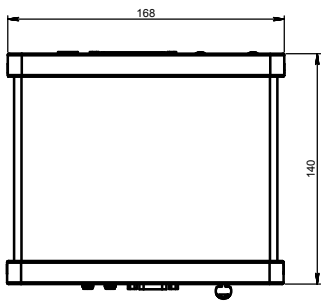
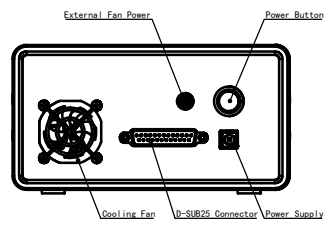
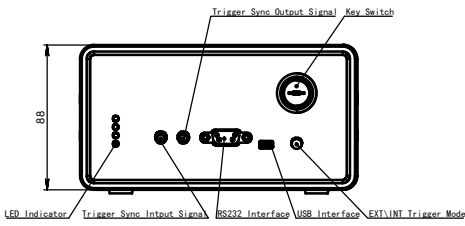


Typical Pulse

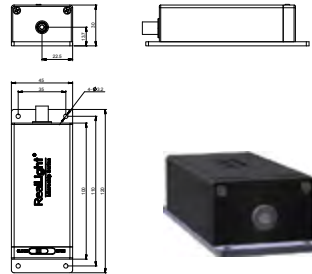


Beam Profile

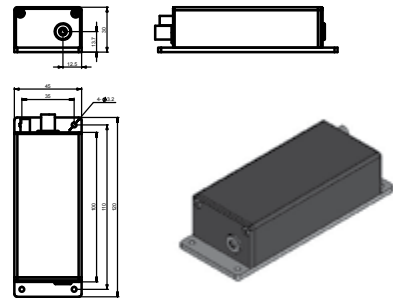
## Mechanical Drawings (in mm)



Power Supply



Laser Head (middle laser outlet)



Laser Head (side laser outlet)

