



Electro Optical Components, Inc.

5464 Skylane Boulevard, Suite D, Santa Rosa, CA 95403

Toll Free: 855-EOC-6300

www.eoc-inc.com | info@eoc-inc.com



ULO Optics

TECHNICAL DATA SECTION

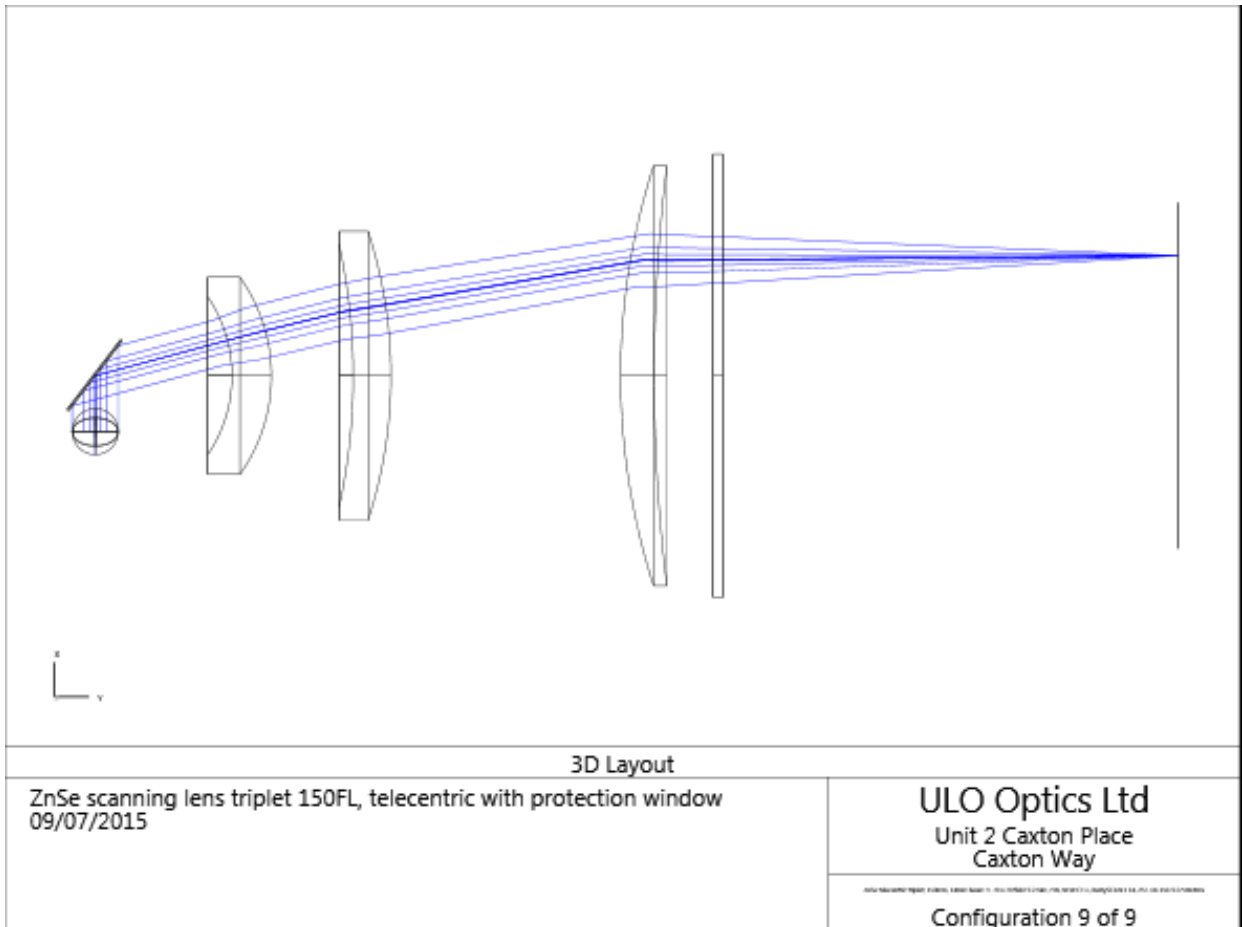
ZST-14-150 TELECENTRIC SCANNING LENS

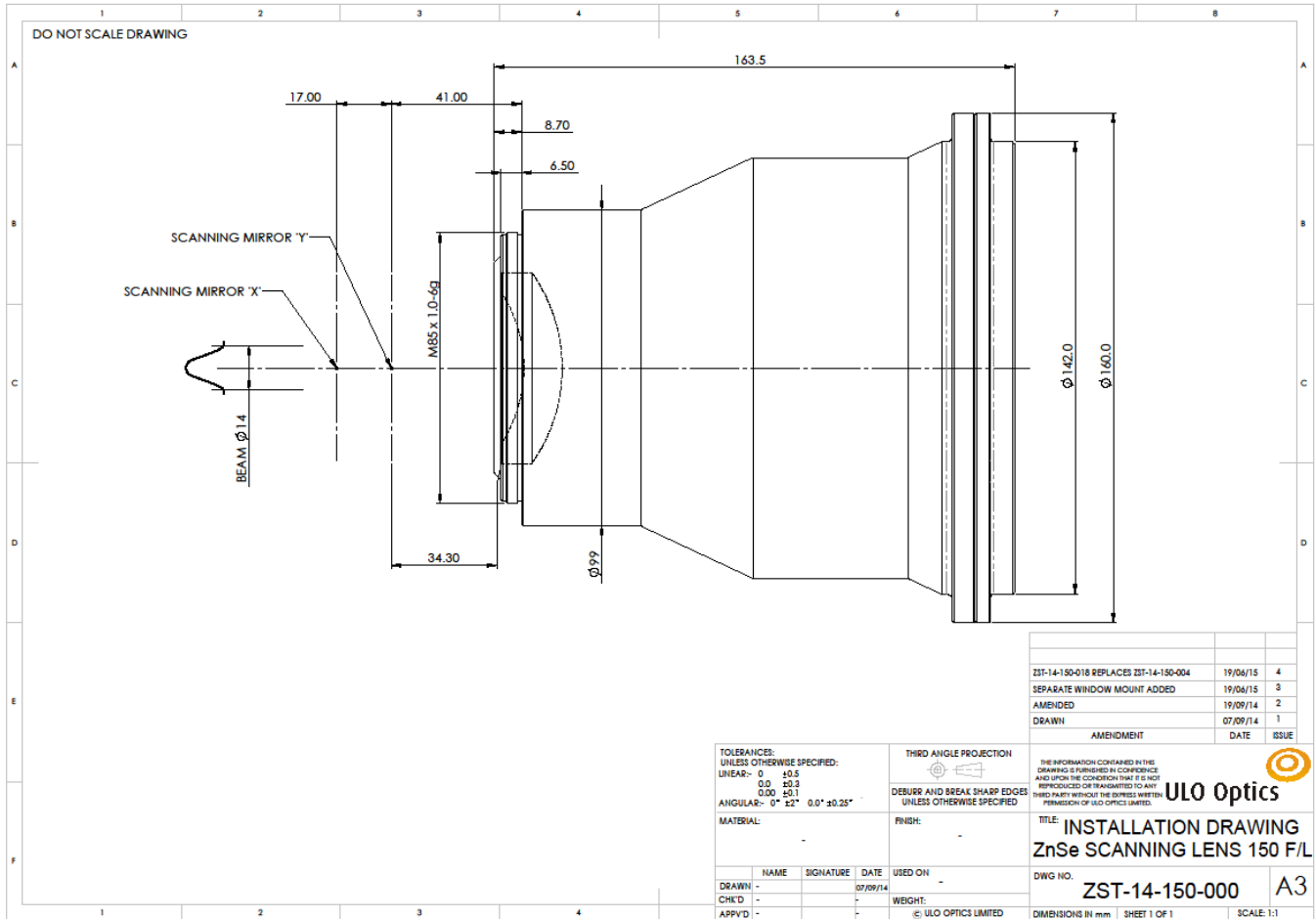


SPECIFICATIONS

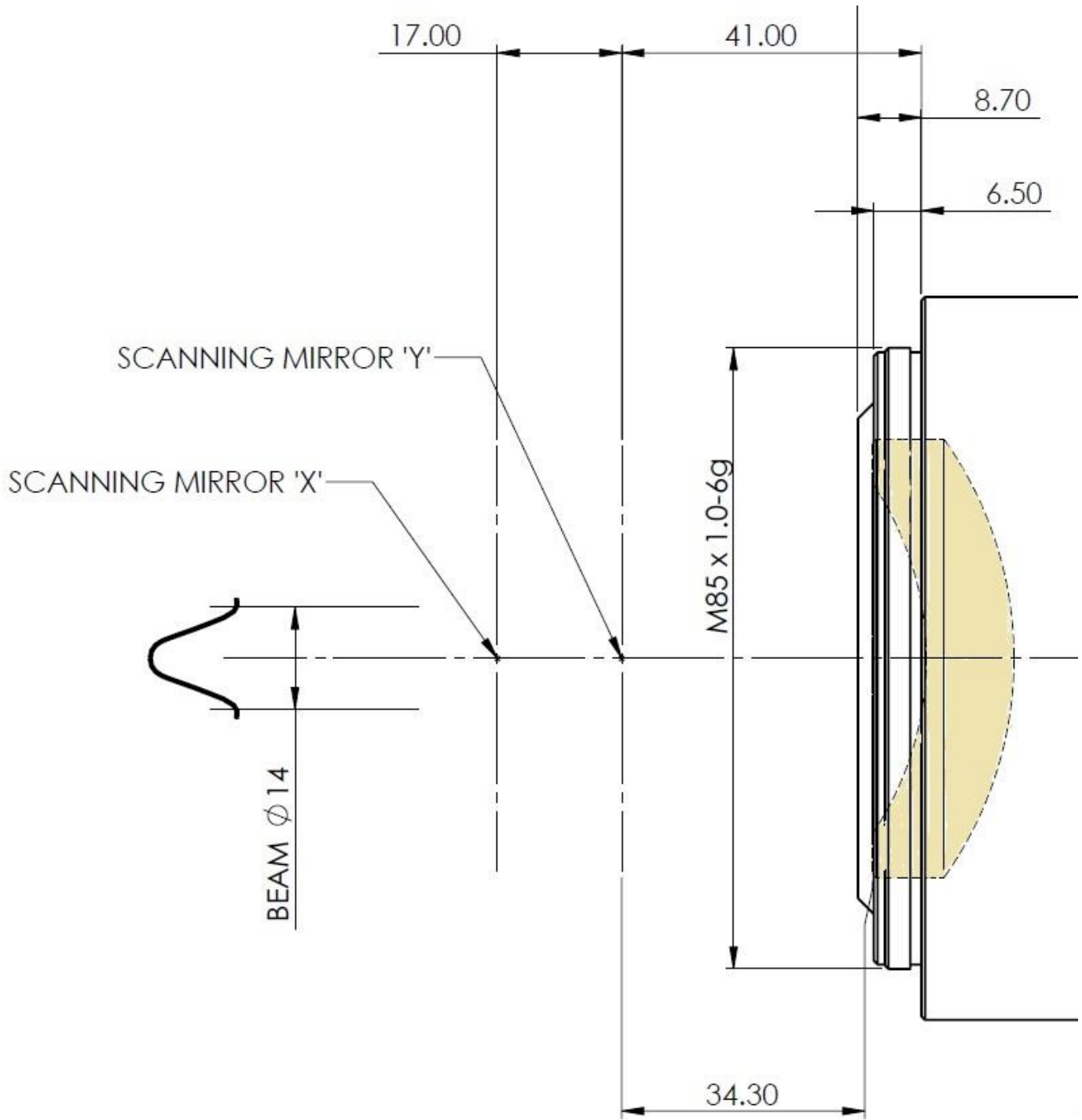
Optics	Triplet ZnSe lens plus ZnSe protection window
Coatings	AR/AR @ 9.3 or 10.6 μ m for CO ₂ laser, R < 0.2%
Focal length	150mm
Working distance from end of mount	131.7mm @ 9.3 μ m, 132.9mm @ 10.6 μ m
Field size	70 x 70mm
Optical field	+/-15 deg
Spot size	130 μ m (diffraction limited) with 14mm 1/e ² beam
Maximum telecentric error	1.6deg
Protection window diameter and	135mm diameter, 3.0mm thick

thickness	
Lens cell	Black anodised Aluminium with M85 x 1.0 thread
Protection window mount	Black anodised Aluminium . Window is held in mount by clamp ring. Fits to lens cell by inserting over three screws and twisting to lock in place.
Overall dimensions	163.5mm long x 160mm maximum diameter
Weight	~2kg





Installation and dimensions diagram



Detail of input end of lens cell.

Note:

- 1) Distance from Y mirror to edge of first lens is 34.30mm.
- 2) Distance from Y mirror to input end of lens cell is equal to 32.3mm (= 41.0 – 8.7).