



## PRELIMINARY DATA SHEET

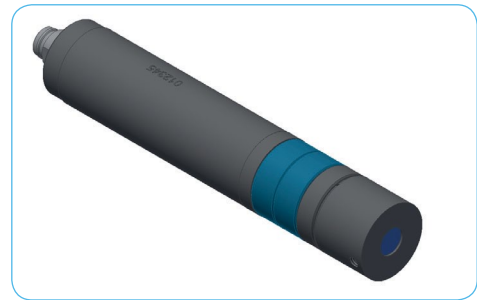
# ilumVISION

## Machine Vision Laser diode module

The ilumVISION laser diode module is designed for illumination in machine vision applications. With its homogeneous line it serves applications which needs a homogeneous illumination. The options "thin line" or "high depth of focus" offer the possibility for either a high resolution for small structures or for having a high operating range.

### FEATURES

- Laser diode module
- adjustable focus
- homogeneous line
- different wavelength available



ilumVISION

### Specifications mechanical

Material	Aluminium anodized
Length	94,86 mm
Length of cable	n. s.
Diameter	17,9 mm

### Specifications optical

Wavelength	520 / 660 nm
Optical output power (max.)	50 / 130 mW
min. line thickness (typ. @300 mm distance)	100 µm
Line Homogeneity	± 20 %
Line options	Standard (thin line or high depth of focus)
Focus distance	300 - 1000 mm
Laser safety class	3B
Beam divergence	n. s.
Beam deviation	10 mrad
Fan angle	30° / 60°

### Specifications electrical

Galvanic isolation	Yes (VCC and modulation input)
Operating voltage Vcc	4.5 VDC - 30 VDC (reverse voltage protection, for all wavelengths)
Operating current	350 mA max.
Modulation voltage	3 VDC - 5 VDC
Modulation	1 MHz
Connection options	M8 flange plug or cable